

COCHLEAR™ NUCLEUS®

PROFILE WITH SLIM STRAIGHT (CI522)

THE ONLY SLIM AND THIN
IMPLANT OPTION

Hear now. And always



THE WORLD'S THINNEST COCHLEAR IMPLANT

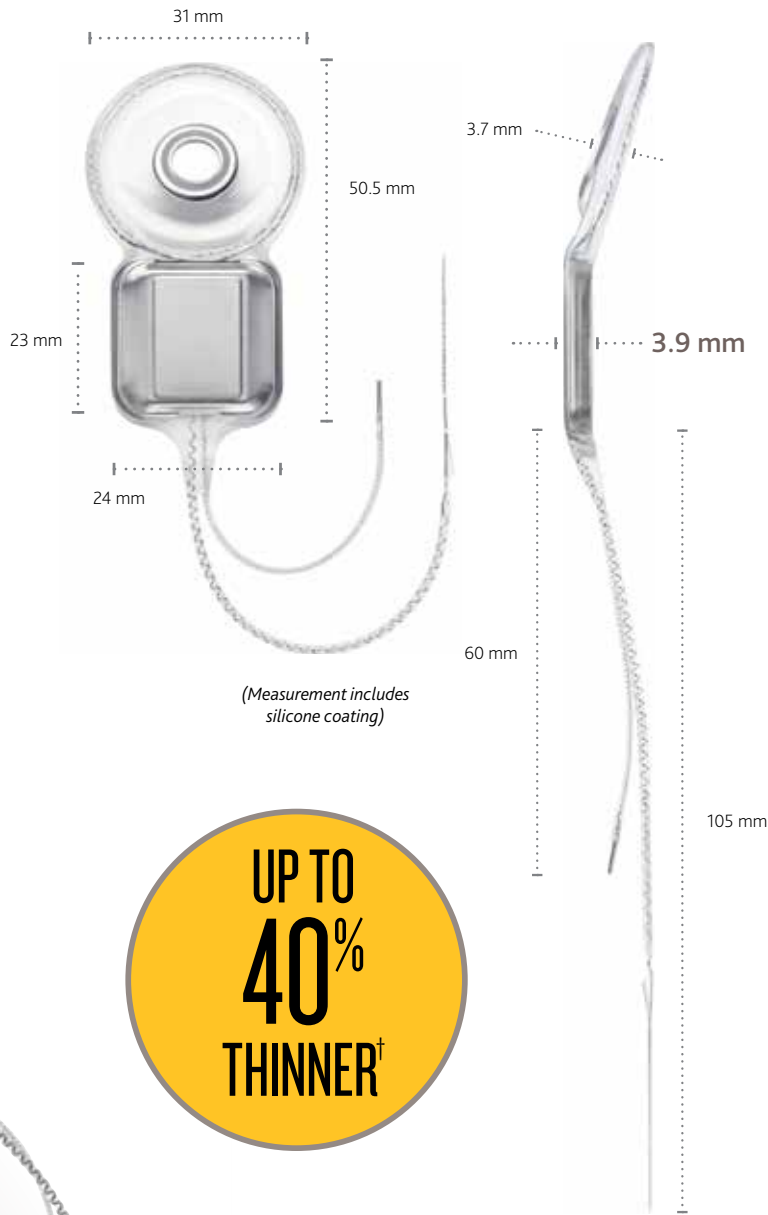
The Cochlear Nucleus Profile Series platform is the absolute thinnest cochlear implant available today.* The thin design dramatically reduces the implant profile to maximize discretion while contouring nicely to the curvature of the head. This discreet benefit is an important factor not only for parents choosing a cochlear implant for their children but for all cochlear implant candidates regardless of age.

OUR THINNEST IMPLANT EVER
The Nucleus Profile is the thinnest implant we have ever built. At only 3.9mm, the Profile is the perfect choice for both pediatric and adult patients alike. In addition, Cochlear has reinforced the silicone rubber surrounding the implant for added protection.

MRI COMPATIBLE
In the USA, FDA has approved for up to 1.5 tesla with magnet removal.[‡]

In Canada, Health Canada has approved for up to 3.0 tesla with magnet removed and up to 1.5 tesla with magnet in place provided proper wrapping technique.**

Best MRI outcomes are achieved by removing the magnet, which reduces the image artifact by 60-70% around the implant site.¹ Potentially resulting in better diagnostic values.



*The Nucleus Profile Implant is only 3.9mm thin.
**For more information please reference Canada Physicians Packet Insert and Radiographers Instructions for use.
‡For more information please reference US Physicians Packet Insert.
†40% thinner than other implant manufacturers electrodes, measurements according to manufacturers' electrode specifications

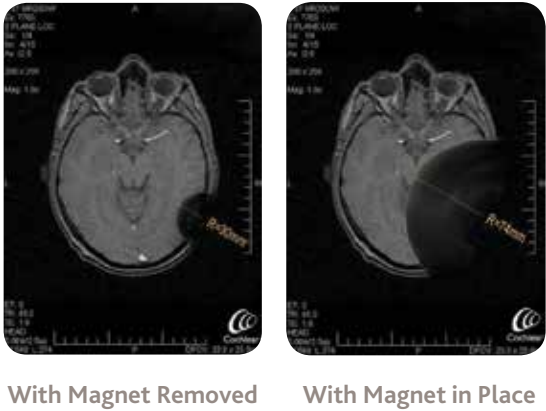
NUCLEUS PROFILE PROVIDES NUMEROUS BENEFITS BEYOND JUST A THIN DEVICE

- 1 LONGER LEAD LENGTH**
With 15mm increased lead length, the updated electrode is designed to accommodate differences in surgical preference.
- 2 ROUND WINDOW AND COCHLEOSTOMY INSERTION**
Designed for consistent Scala Tympani placement with variable insertion depth for full spectral hearing
- 3 THINNER AND STRONGER**
With increased impact resistance, the Nucleus Profile is almost two times stronger than the most reliable implant ever built, the previous generation Nucleus CI24RE device.²
- 4 SIDE BY SIDE ELECTRODE LEAD EXIT**
The Profile Series simplifies surgical planning, with a the same procedure for a left and right ear. All while achieving a thinner, more protected design.
- 5 SMOOTH SURFACE FOR ANTI-BACTERIAL FORMATION**
The geometry and surface finish of the Profile Series have been built to minimize bacterial formation and hence minimize the risk of infection issues.
- 6 ACCOMMODATES PREFERRED FIXATION METHODS FROM WELL TO POCKET**
 - Ramp well and suture to bone³
 - Ramp well and periosteal suture⁴
 - Ramp well and tight pocket⁵
 - Periosteal pocket⁶
- 7 REMOVABLE MAGNET IDEAL FOR MRI**
The Profile is MRI compatible with removable magnet to ensure the best imaging outcome.¹

NUCLEUS PROFILE IMPLANT

NUCLEUS PROFILE QUICK SPECS

Width	24mm
Height	50.5mm (23mm R/S)
Profile	3.9mm
Coil Width	31mm
Coil Profile	3.7mm



Hear now. And always

As the global leader in implantable hearing solutions, Cochlear is dedicated to bringing the gift of sound to people with moderate to profound hearing loss. We have helped over 350,000 people of all ages live full and active lives by reconnecting them with family, friends and community.

We give our recipients the best lifelong hearing experience and access to innovative future technologies. For our professional partners, we offer the industry's largest clinical, research and support networks.

That's why more people choose Cochlear than any other hearing implant company.

Not all patients with hearing loss are candidates for cochlear implantation or hybrid implantation. Cochlear implantation or hybrid implantations are surgical procedures, and carry the risks typical for surgery. For complete information regarding indications, warnings and adverse effects, please refer to the Nucleus Package Insert available at www.Cochlear.com/US/NucleusIndications

References

1. F. Risi*, A. Saldanha, R. Leigh, P. Gibson Magnetic resonance imaging safety of Nucleus 24 cochlear implants at 3.0 T International Congress Series 1273 (2004) 394–398
2. Cochlear Nucleus Implant Reliability Report, February 2014
3. Cochlear Nucleus Profile (CI512) Surgeons Guide
4. Adunka OF, Buchman CA., Cochlear Implant Fixation in Children USING Periosteal Sutures. *Otology Neurotology*, 2007 Sep;28(6): 768-70
5. O'Donoghue GM, Nikolopoulos TP. Minimal Access Surgery for Pediatric Cochlear Implantation. *Otology Neurotology* 2002 November; 23 (6): 891-4.
6. James AL, Papsin BC. Device Fixation and Small Incision Access for Pediatric Cochlear Implants. *International Journal Pediatric Otolaryngology*. 2004 Aug;68 (8): 1017-22.

www.Cochlear.com/US

Follow us on



Cochlear Americas
13059 East Peakview Avenue
Centennial, CO 80111 USA
Telephone: 1 303 790 9010
Support: 1 800 483 3123

Cochlear Canada Inc.
2500-120 Adelaide Street West
Toronto, ON M5H 1T1 Canada
Telephone: 1 416 972 5082
Fax: 1 416 972 5083

©Cochlear Limited 2015. All rights reserved. Hear now. And always and other trademarks and registered trademarks are the property of Cochlear Limited.



FUN2443 ISS1 JUN15

